



AMA medical student membership, discounts and benefits

Supporting you today as a medical student. Protecting your future as a physician.

Join the American Medical Association, the largest medical association in the nation. As soon as you join, you'll get exclusive benefits and free access to:

- Leadership and training opportunities to help distinguish you as a resident candidate and resources to find the right Match
- JAMA Network™ and USMLE® and COMLEX-USA® test prep
- Networking and advocacy resources to turn your passions into health policy

Exclusive access to discounts and benefits designed for your personal and professional life

1 Free study aid of your choice—with four year membership

First Aid for the USMLE Step 1, 10% off AMBOSS Library subscriptions and Qbank add-ons, 3-month Boards & Beyond subscription or up to \$60 off UWorld USMLE® or COMLEX-USA® QBanks.

2 UpToDate®

AMA student members save 50% on UpToDate® subscriptions.

3 Medical Student Section (MSS)



The AMA Medical Student Section strives to be medical students' voice within the AMA for improving medical education and advocating for the future of medicine.

4

ClassPass

Get worldwide access to thousands of top-rated gyms, fitness studios and more—all with one app. AMA members get a 14-day free trial plus 10% bonus credits on ClassPass memberships.

5

Full access to JAMA Network®

Access the authoritative source for cutting-edge research, informative review and thought-provoking opinion across medical specialties. Free online access to *JAMA*® and 11 specialty journals.

6

FREIDA™

Search over 13,000 residency and fellowship programs on FREIDA™, the AMA Residency & Fellowship Database®. Access the FREIDA Residency Calculator and a members-only dashboard where you can compare and rank programs.

7

AMA Research Challenge

Find research opportunities for medical students and showcase your research for the chance to win \$10,000.

8

Laurel Road

Laurel Road's team of student loan specialists at GradFin¹ can help you understand your repayment and forgiveness options with a no-cost consultation. Plus, AMA members get a special \$50 discount ² off an annual membership with GradFin.

9

1000+ leadership opportunities

Shape AMA policy, increase relevant skills, network with peers, and interact with members with similar interests or backgrounds.



10 **Lenovo**

Receive up to 50% off laptops, tablets, desktops, servers, accessories and more.

11 **Hertz**

Save up to 25% on car rental base rates at participating locations worldwide.³ Additional benefit includes waived young renter fee and complimentary additional driver in the U.S.

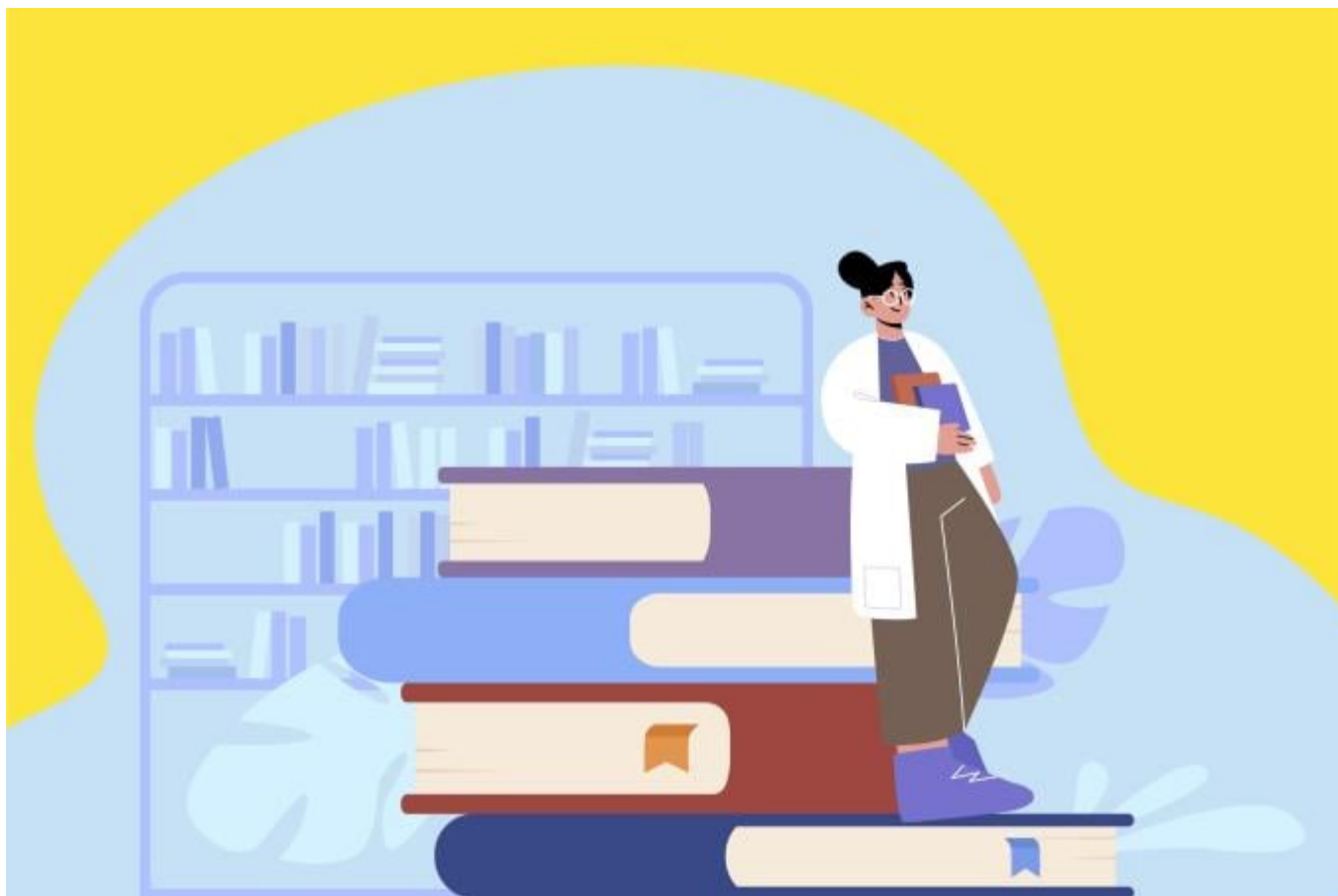
12 **Train to become an advocate**

Learn how to advocate for physicians and patients. Meet legislators on Capitol Hill at the Medical Student Advocacy Conference.

Subscribe and succeed in medical school

Get tips and insider advice from the AMA on succeeding in medical school—delivered to your inbox.

Subscribe Now



Disclaimers

¹ GradFin and Laurel Road are brands of KeyBank N.A.

² AMA members get a \$50.00 discount on an annual Public Service Loan Forgiveness (“PSLF”) program membership with GradFin (“Offer”). The discount will be applied on the current annual membership fee of \$249.00 and will automatically apply at checkout. This Offer is only available to current AMA members, is non-transferable and cannot be applied to previous membership purchase(s). This Offer cannot be redeemed for cash or combined with other offers and is subject to cancellation at any time and without notice.

Laurel Road is a brand of KeyBank National Association. All loans are provided by KeyBank© <2024> KeyCorp® All Rights Reserved.

³ Discount applies to pay later rate only. Taxes, fees and options excluded. Additional terms apply.